

MENOMINEE RANGE HISTORY – CATALOG OF MENOMINEE IRON RANGE MINING PHOTOGRAPHS

[Compiled by William J. Cummings]

WAUCEDAH

Ward Mine (early 1870's)

**Breen Mine (1877; reopened in
1904)/Maryland Mine (1877)**

**Emmett Mine (1877; reopened
1892)**

Ingalls Mine (1877)

LORETTO

**Appleton Mine (1892)/Eleanor Mine
(1892)**

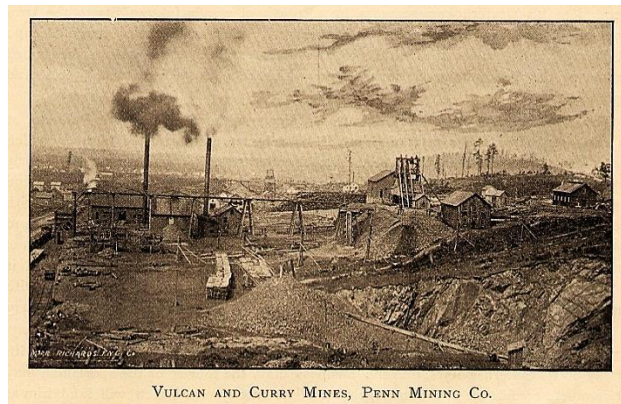
Loretto Mine (1892)

VULCAN

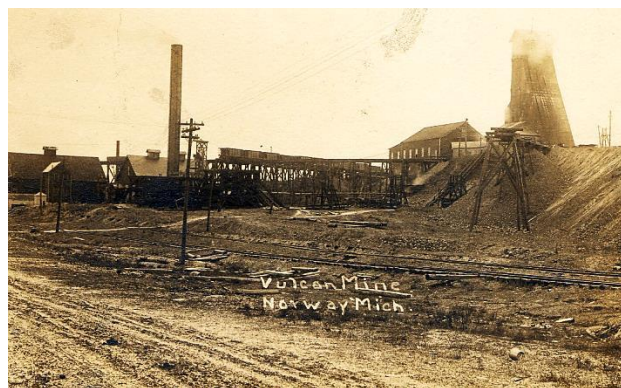
**Breitung Mine (1877)/Vulcan Mine
(1877)/West Vulcan Mine**



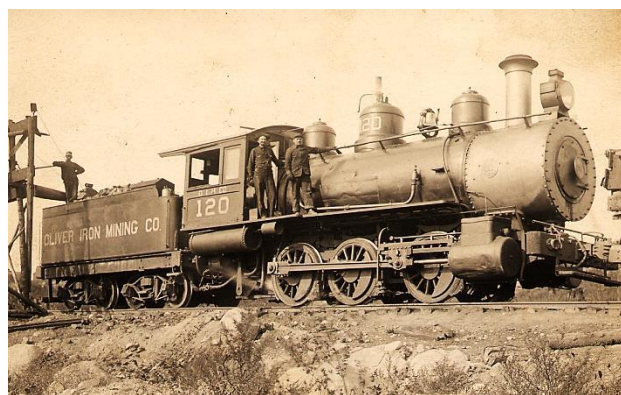
Vulcan Mine Looking Northeast
May, 1886



Vulcan and Curry Mines, Penn Mining
Company
Nursey, 1891



Vulcan Mine, Norway, Michigan
Postmarked February 24, 1914



Oliver Iron Mining Company Engine No.
120 with Coal Car, ca. 1910-1915

MENOMINEE RANGE HISTORY – CATALOG OF MENOMINEE IRON RANGE MINING PHOTOGRAPHS

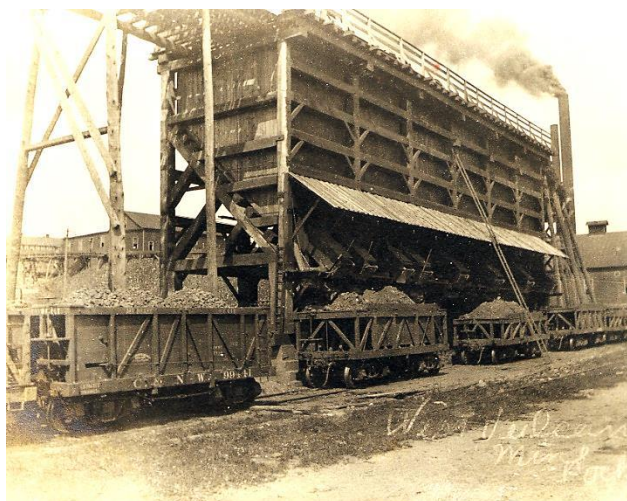
[Compiled by William J. Cummings]



Penn Iron Company's New Central Shaft,
Vulcan, Mich., ca. 1930-1940



Central Mine, Penn Iron Mining Co., Vulcan
and Norway, Mich., ca. 1940-1950



West Vulcan Mine Dock, ca. 1907-1920

East Vulcan Mine (1878)



East Vulcan Mine Looking Northeast
May, 1886



East Vulcan Mine Miners
ca. 1910-1915

Garfield Mine (1881)

Sturgeon River Mine (1881)

Southeast Vulcan Mine (1892)/Verona Mine (1900)

NORWAY

Cyclops Mine (1878)

MENOMINEE RANGE HISTORY – CATALOG OF MENOMINEE IRON RANGE MINING PHOTOGRAPHS

[Compiled by William J. Cummings]

Norway Mine (1878)



Norway Mine, Looking East, Penn Mines
May, 1886

Saginaw Mine (1878)/Perkins Mine

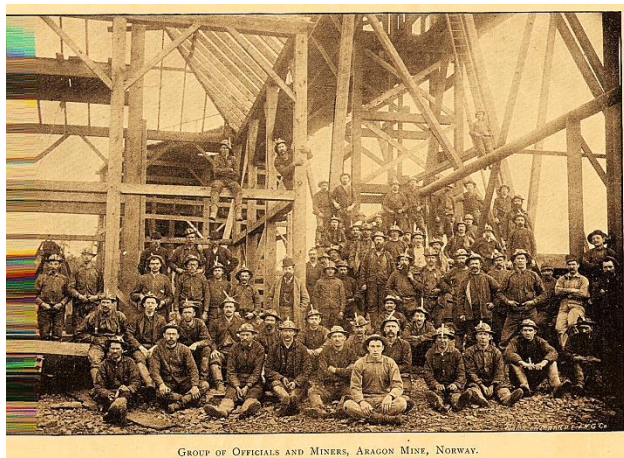
Curry Mine (1879)

Stephenson Mine (1879)

Lowell Mine (1880)

Brier Hill Mine (1881)

Aragon Mine (1889)



GROUP OF OFFICIALS AND MINERS, ARAGON MINE, NORWAY.

Group of Officials and Miners, Aragon Mine,
Norway
Nursey, 1891



No. 4 Aragon and Brier Hill New Shaft,
Norway, Mich., 1910



Aragon Mine #5, Norway, Mich.
Ca. 1904-1918



MENOMINEE RANGE HISTORY – CATALOG OF MENOMINEE IRON RANGE MINING PHOTOGRAPHS

[Compiled by William J. Cummings]

5, Aragon Shaft, Norway, Mich.
Postmarked 1912

QUINNESEC

Quinnesec Mine (1878)



View of Oliver Mine No. 3, Norway, Mich.
No. 12, 1908
Postmarked August 12, 1908



Open Pit [Quinnesec Mine], Quinnesec,
Mich., postmarked 1906



Oliver No. 5, Norway, Mich.
No. 9, 1908
Postmarked August 12, 1908

Finlay Mine (1892)

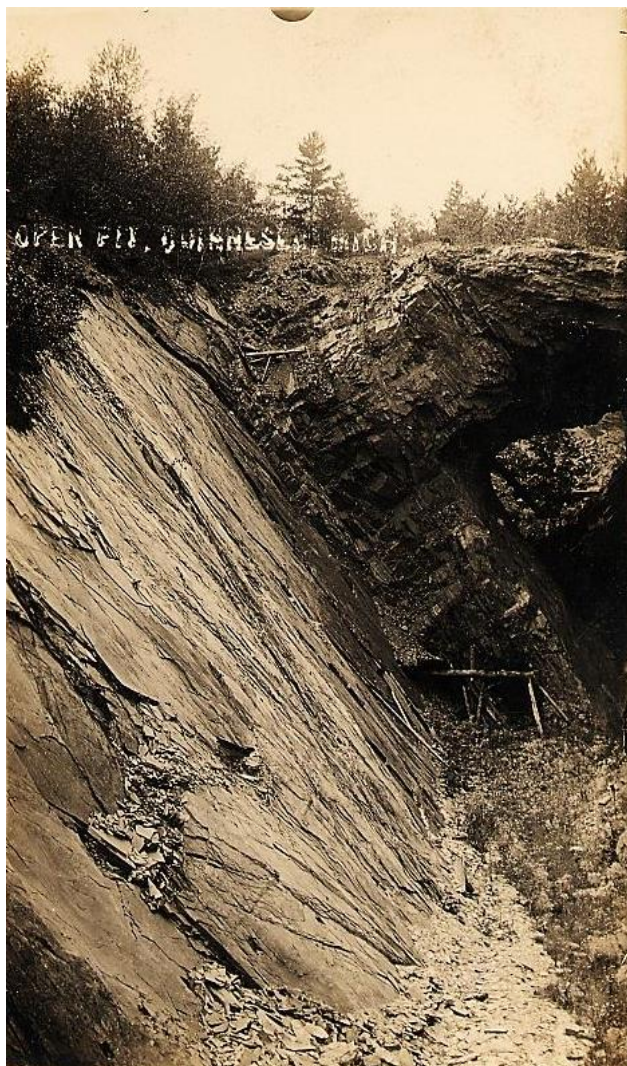
Munro Mine (1903)/Section 6 Mine

Few Mine (xxxx)

Waverley Mine (xxxx)

MENOMINEE RANGE HISTORY – CATALOG OF MENOMINEE IRON RANGE MINING PHOTOGRAPHS

[Compiled by William J. Cummings]



Open Pit [Quinnesec Mine], Quinnesec,
Mich., postmarked 1911



Trammers, Quinnesec Mine, Quinnesec,
Mich., postmarked 1908



Devil's Ice Box [Quinnesec Mine],
Quinnesec, Mich., ca. 1940-1950

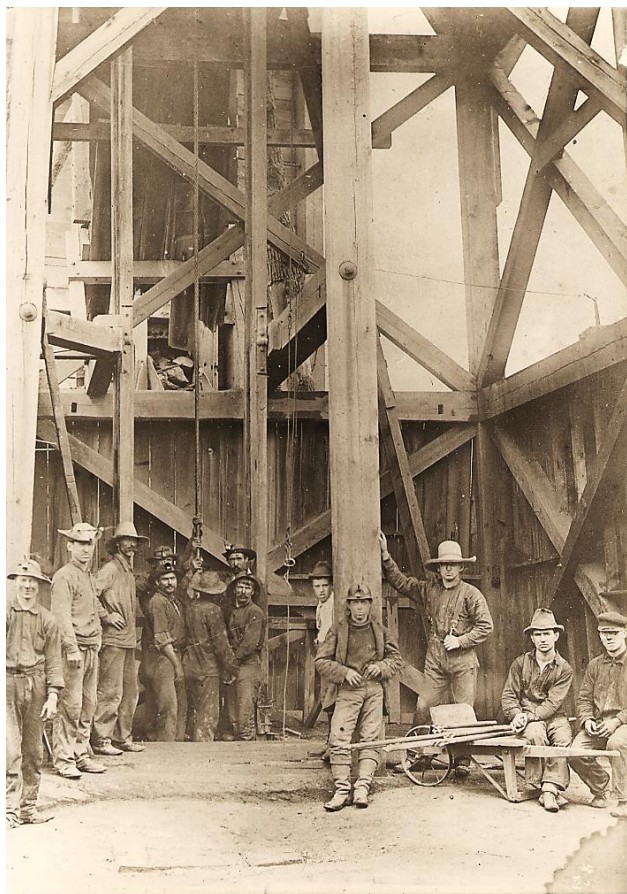
Scandia Mine (1881)

Indiana Mine (1882)

**Rachel Mine (1891)/Ruth Mine
(1891)/Cundy Mine (1899)**

MENOMINEE RANGE HISTORY – CATALOG OF MENOMINEE IRON RANGE MINING PHOTOGRAPHS

[Compiled by William J. Cummings]



Cundy Mine, Quinnesec, ca. 1896

**Protection Mine (1896)/Cuff Mine
(1899)**

**Gladstone Mine (1901)/Forest Mine
(1904)**

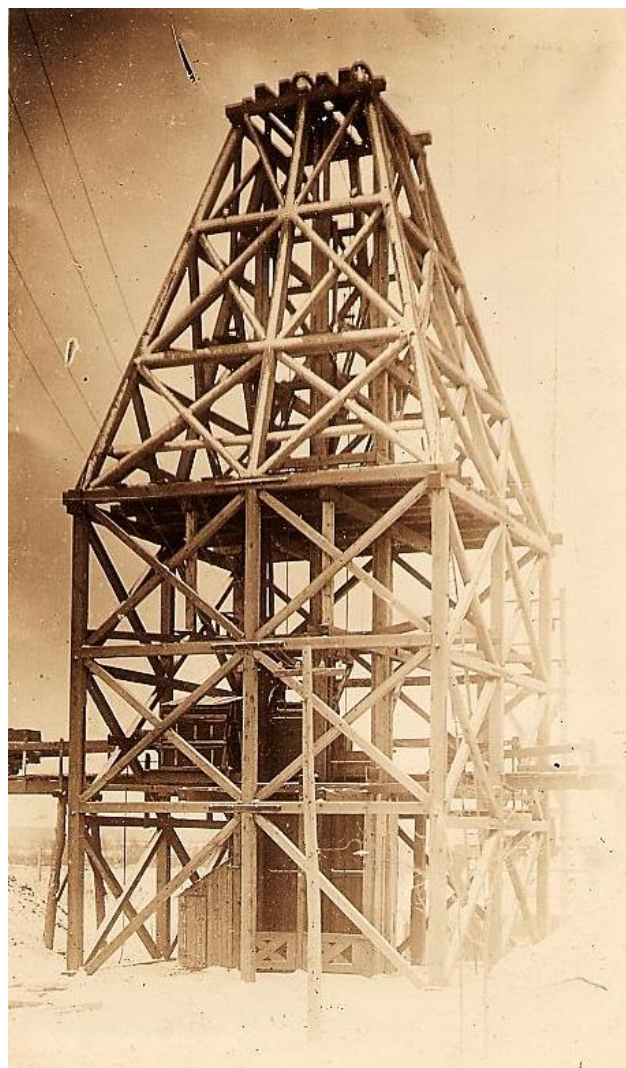
Vivian Mine (1902)

Federal Mine (xxxx)

Illinois Mine (xxxx)



Unidentified Mine, possibly Quinnesec,
Mich., postmarked 1911



MENOMINEE RANGE HISTORY – CATALOG OF MENOMINEE IRON RANGE MINING PHOTOGRAPHS

[Compiled by William J. Cummings]

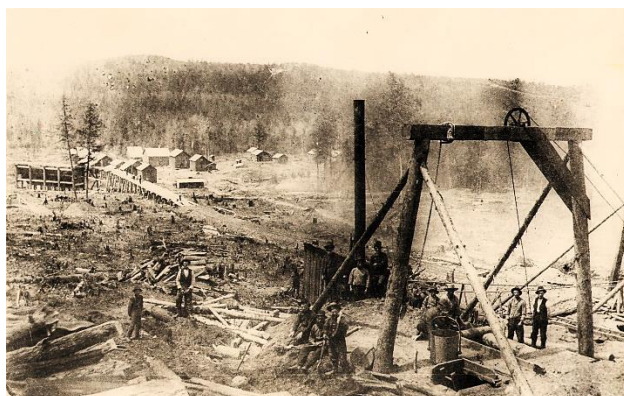
Unidentified Mine Shaft Housing, possibly
Cundy Mine, Quinnesec, Mich.
Postmarked 1911



Diamond Drilling near Fumee Creek,
Quinnesec, Mich., Walter Alquist, Axel
Alquist, Amil LaPointe (Roxanne Anderson)

IRON MOUNTAIN

Chapin Mine (1880)



Chapin Mine, fall of 1879 or spring of 1880



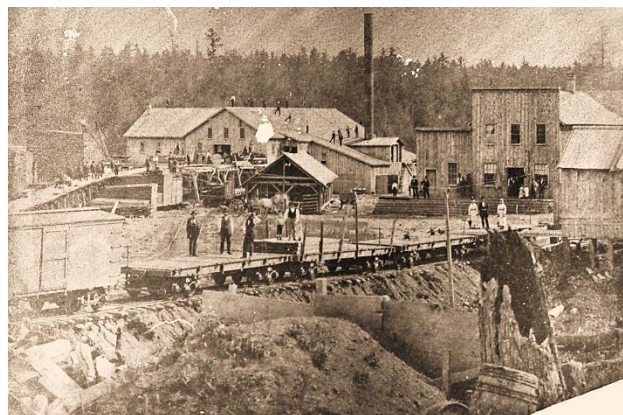
Chapin Mine, probably spring of 1880



MENOMINEE RANGE HISTORY – CATALOG OF MENOMINEE IRON RANGE MINING PHOTOGRAPHS

[Compiled by William J. Cummings]

Chapin Mine, probably spring or summer,
1880



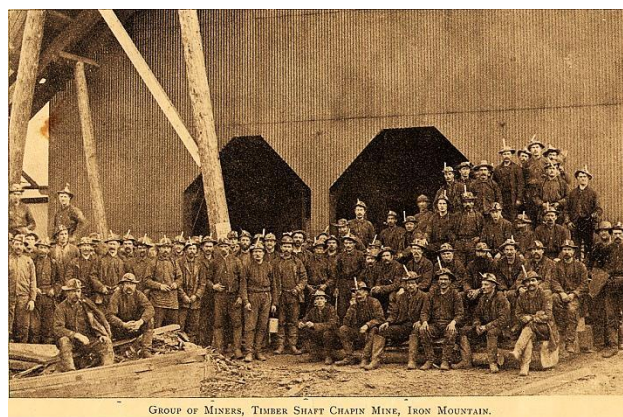
Possibly view of Chapin Mine Sawmill

Chapin Mine, Facing East, ca. 1882



Chapin Mine looking west, showing early
shafts including D Shaft with original
building housing the Cornish Pumping
Engine, ca. 1893

Chapin Mine with early shaft houses

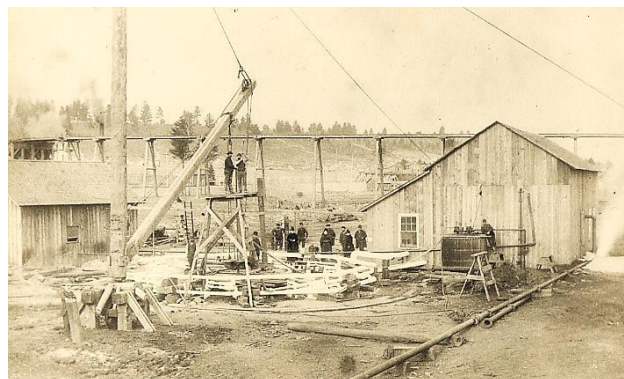


GROUP OF MINERS, TIMBER SHAFT CHAPIN MINE, IRON MOUNTAIN.

MENOMINEE RANGE HISTORY – CATALOG OF MENOMINEE IRON RANGE MINING PHOTOGRAPHS

[Compiled by William J. Cummings]

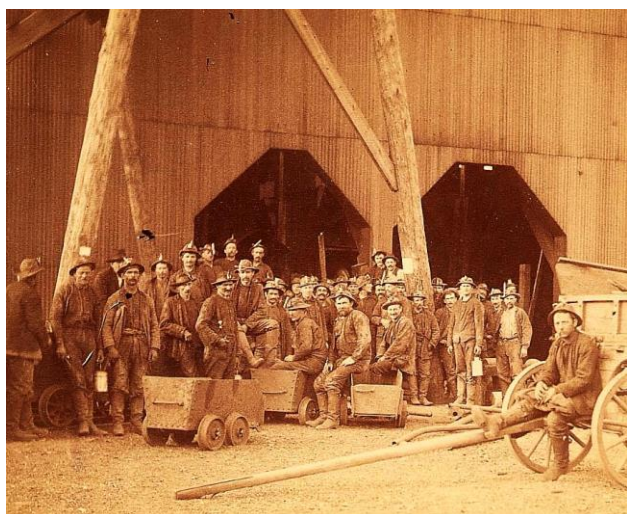
Group of Miners, Timber Shaft, Chapin
Mine, Iron Mountain
Nursey, 1891



Freezing of D Shaft, Chapin Mine
Fall of 1888



Chapin Miners with Lunch Pails, ca. 1905



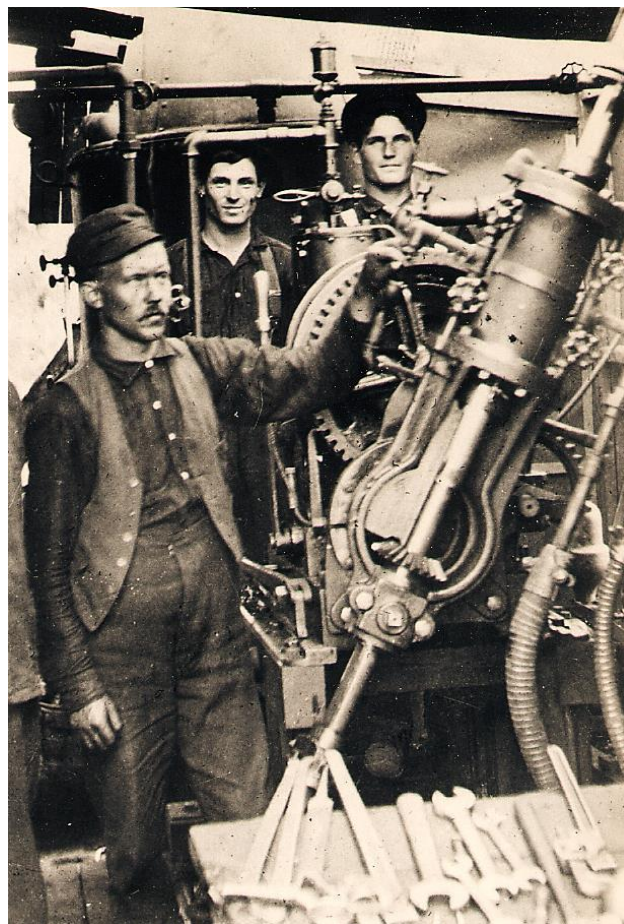
Timber Shaft, possibly D Shaft, Chapin
Mine, ca. 1893-1894

MENOMINEE RANGE HISTORY – CATALOG OF MENOMINEE IRON RANGE MINING PHOTOGRAPHS

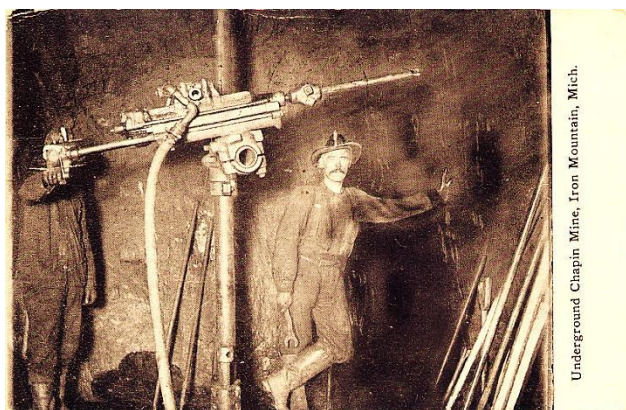
[Compiled by William J. Cummings]



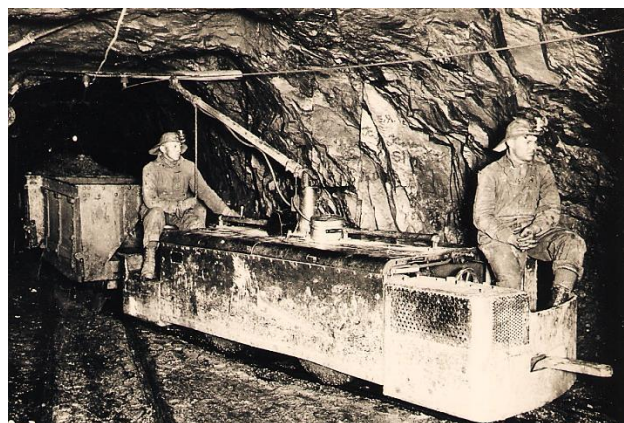
Interior of Chapin Mine showing water flow
Ca. 1900-1910



Probably interior of Chapin Shops, showing
Rand Drill, ca. 1900-1920



Underground Chapin Mine, Iron Mountain,
Mich., showing Rand Drill
Postmarked 1915



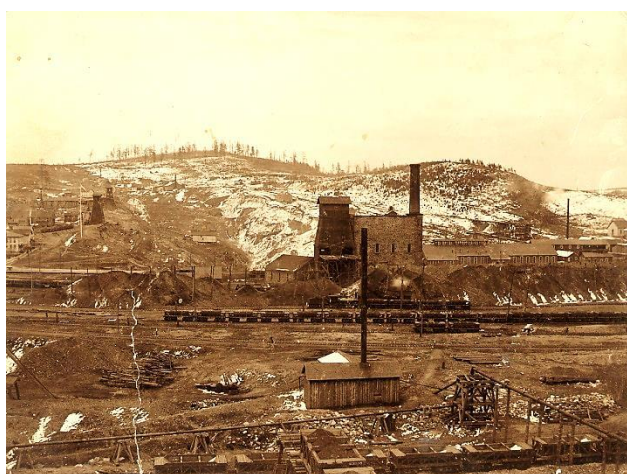
Underground Locomotive, Chapin Mine,
dated 1921

MENOMINEE RANGE HISTORY – CATALOG OF MENOMINEE IRON RANGE MINING PHOTOGRAPHS

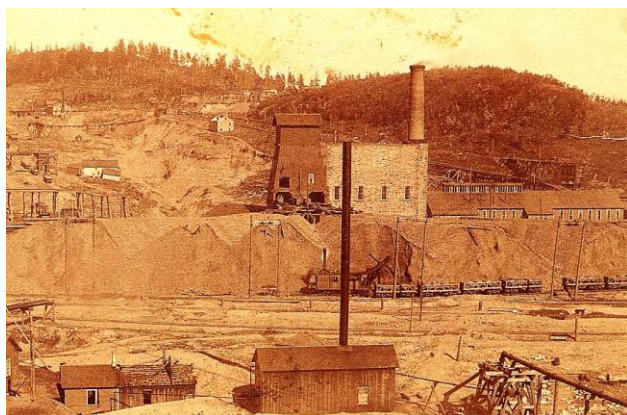
[Compiled by William J. Cummings]



View from Superintendent's House at
Ludington Location Looking East and
Showing Chapin Mine Shops, ca. 1900



Original Sandstone Building Housing the
Cornish Pumping Engine, Looking East with
Millie Hill in Background, ca. 1893-1898



Original Sandstone Building Housing the
Cornish Pumping Engine, Looking East with
Millie Hill in Background, ca. 1893-1894

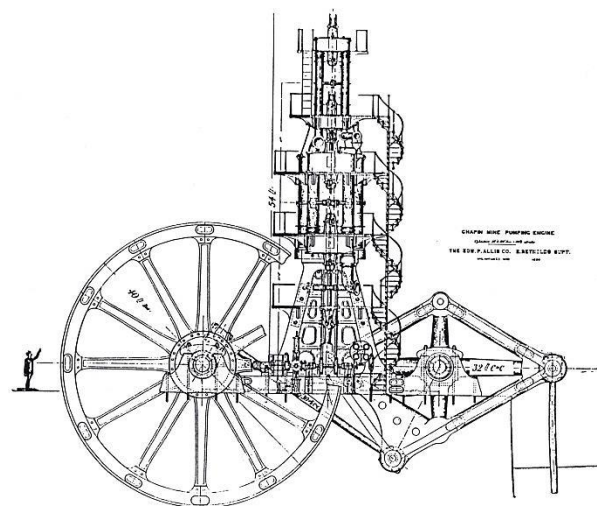


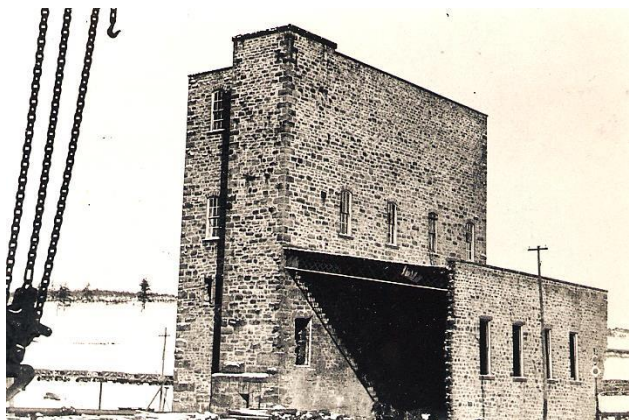
Diagram of Cornish Pump which appeared
in *The Iron Range*, Iron Mountain's weekly
newspaper, on May 19, 1892



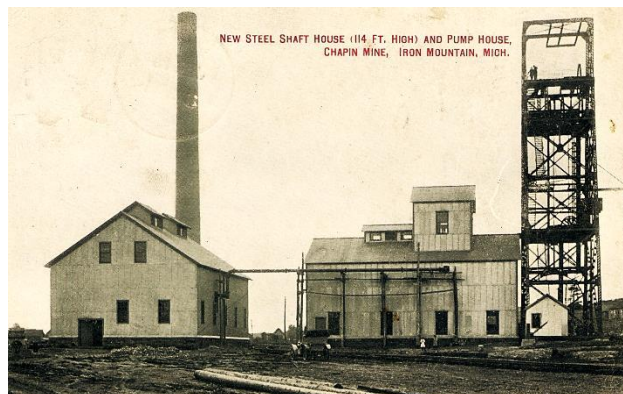
Original Sandstone Building Housing the
Cornish Pumping Engine before being torn
down in 1899

MENOMINEE RANGE HISTORY – CATALOG OF MENOMINEE IRON RANGE MINING PHOTOGRAPHS

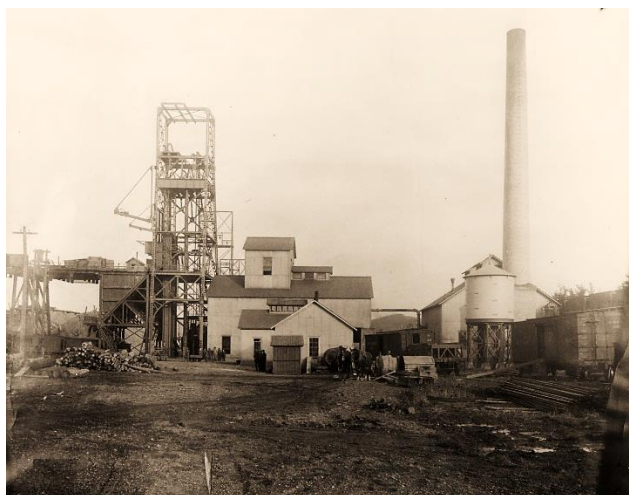
[Compiled by William J. Cummings]



Original Sandstone Building Housing the Cornish Pumping Engine with Shaft House Removed before being torn down in 1899



Postcard view showing New Steel Shaft House (114 ft. high) and Pump House, Chapin Mine, Iron Mountain, Mich., postmarked 1914



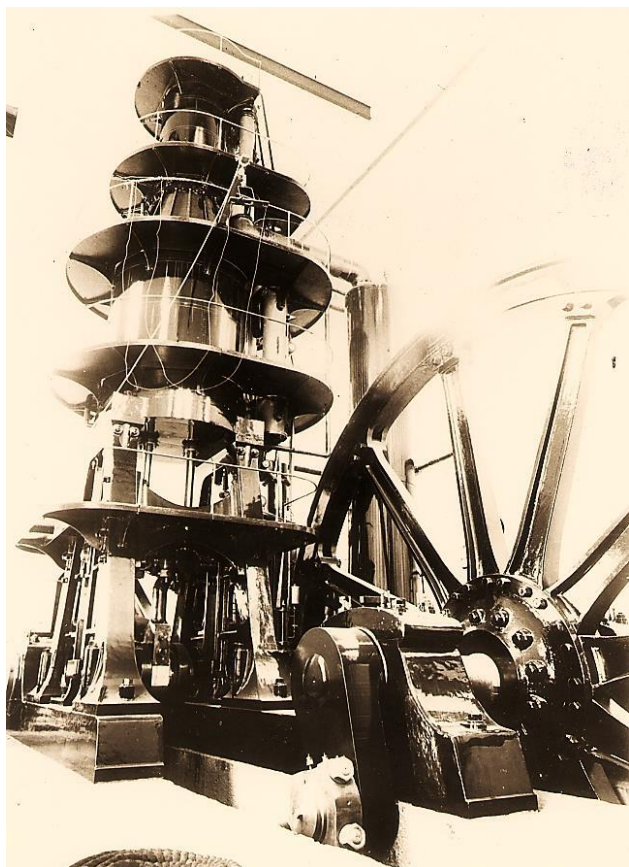
C Ludington Shaft of the Chapin Mine with Steel Shaft Housing and Cornish Pumping Engine Building and Boiler House, dated October 19, 1912



Miners at C Ludington Shaft, ca. 1915-1920

MENOMINEE RANGE HISTORY – CATALOG OF MENOMINEE IRON RANGE MINING PHOTOGRAPHS

[Compiled by William J. Cummings]



Cornish Pumping Engine in Engine House
at C Ludington Shaft of the Chapin Mine,
dated October 19, 1912



New Steel Shaft, Ludington Mine, Iron
Mountain, Mich., showing building housing
the Cornish Pumping Engine
ca. 1908-1910



MENOMINEE RANGE HISTORY – CATALOG OF MENOMINEE IRON RANGE MINING PHOTOGRAPHS

[Compiled by William J. Cummings]

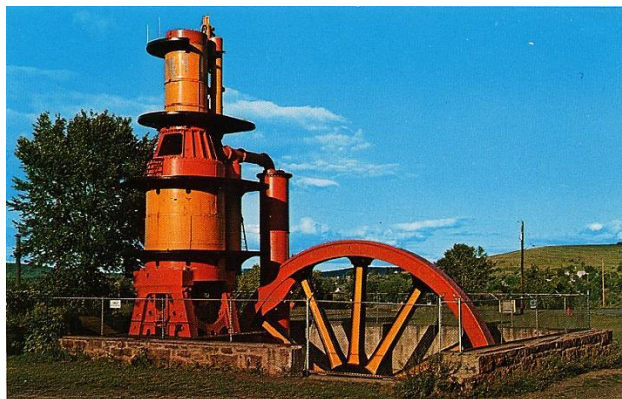
Postcard view of Cornish Pump, Iron Mountain, Mich., with pump exposed and shaft house still present, ca. 1935-1940



Largest Cornish Pump in the World, Iron Mountain, Mich., postcard view
ca. 1935-1940



Postcard view with shaft housing demolished, ca. 1960-1970



Postcard view with shaft housing demolished and different paint job
ca. 1970-1980



Chapin Mine Cave-In, ca. 1910-1915

MENOMINEE RANGE HISTORY – CATALOG OF MENOMINEE IRON RANGE MINING PHOTOGRAPHS

[Compiled by William J. Cummings]



Sink-Hole, Chapin Mine, Iron Mountain, Mich., postmarked 1908



Iron Mines at Iron Mountain, Mich., showing exposed Cornish Pumping Engine and steel shaft house but no water in the pit, ca. 1940



Chapin Pit Cave-In, ca. 1899, at about the time the original sandstone building was being torn down; early shaft houses; Millie Hill in background



U.S. 2 Cave-In
May 3, 1940 at 2 p.m.



U.S. 2 Road Cave-In, Chapin Mine Pit, Iron Mountain, Mich., May 3, 1940

MENOMINEE RANGE HISTORY – CATALOG OF MENOMINEE IRON RANGE MINING PHOTOGRAPHS

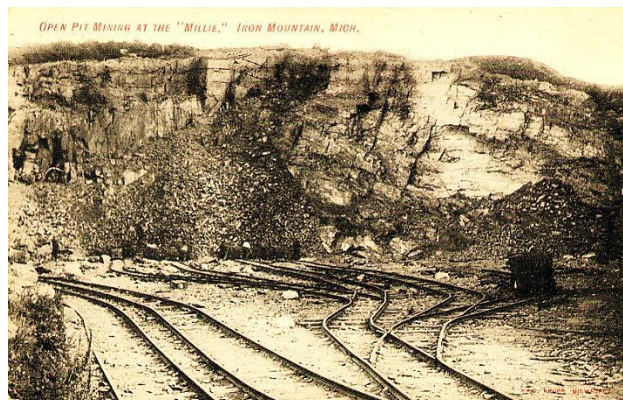
[Compiled by William J. Cummings]



East Chapin Miners with a Rand Drill, 1916

Cornell Mine (1880)

Hewitt Mine/Millie Mine (1880)



Open Pit Mining at the "Millie," Iron Mountain, Mich., postmarked 1908



Postcard of seven miners in the Millie Mine, ca. 1907-1920



Postcard of eleven miners in the Millie Mine, ca. 1907-1920

MENOMINEE RANGE HISTORY – CATALOG OF MENOMINEE IRON RANGE MINING PHOTOGRAPHS

[Compiled by William J. Cummings]



Postcard of two miners with Rand Drills,
possibly in the Millie Mine, ca. 1907-1920

Ludington Mine (1880)



Ludington Mine Mining Officials, identified,
ca. 1883-1890



Ludington Mine Personnel, ca. 1886-1887



RAND DRILLS—4TH LEVEL LUDINGTON MINE.

Rand Drills – 4th Level Ludington Mine
Nursey, 1891



Ludington Mine Shaft and Buildings
Ca. 1893-1894

MENOMINEE RANGE HISTORY – CATALOG OF MENOMINEE IRON RANGE MINING PHOTOGRAPHS

[Compiled by William J. Cummings]



Probably Ludington Mine with Hulst School
in background, ca. 1892-1900

**McKenna Mine (1880)/Keel Ridge
Mine (1880)**

**West Chapin Mine (1882 –
exploration)**

**Hamilton Mine (1883; opened in
1886)**

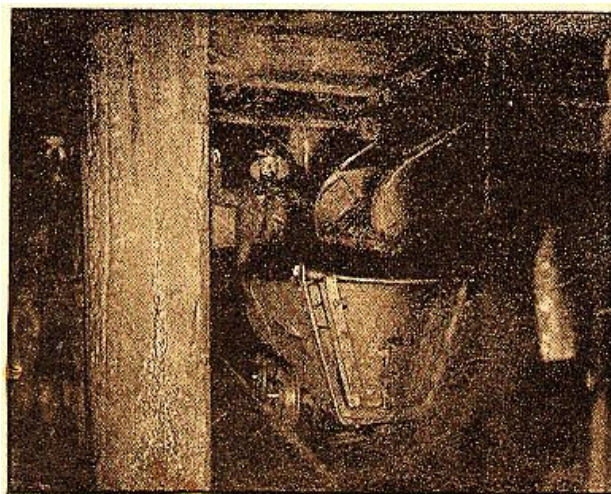


Hamilton Mine Shaft under construction,
looking east with Millie Hill in background
ca. 1883-1886



ROCK DRILLING, TWELFTH LEVEL,
HAMILTON MINE.

Rock Drilling, Twelfth Level, Hamilton Mine
Nurse, 1891

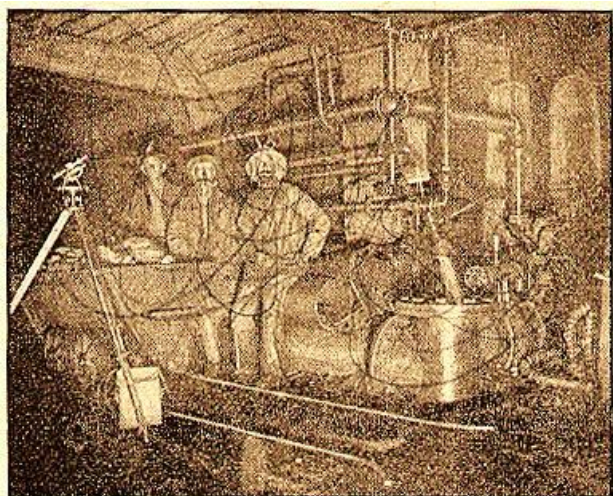


TRAM CAR, THIRTEENTH LEVEL,
HAMILTON MINE.

Tram Car, Thirteenth Level, Hamilton Mine
Nurse, 1891

MENOMINEE RANGE HISTORY – CATALOG OF MENOMINEE IRON RANGE MINING PHOTOGRAPHS

[Compiled by William J. Cummings]



PUMPS, THIRTEENTH LEVEL—HAMILTON MINE.

Pumps, Thirteenth Level – Hamilton Mine
Nursey, 1891



Hamilton Mine with Tramway
ca. 1886-1890



Hamilton Shaft, about 1913, with red
sandstone water tank with iron dome



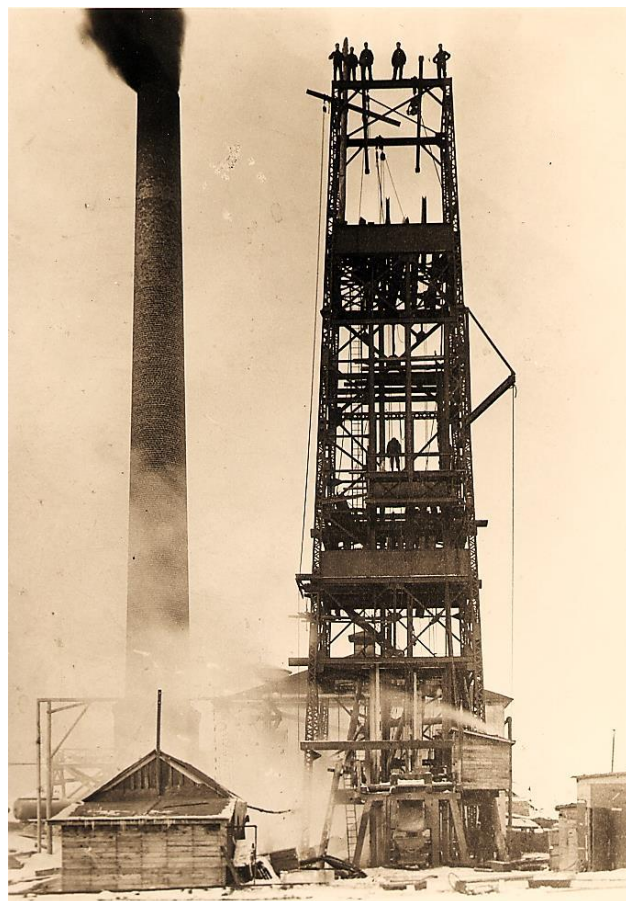
Bailer for No. 2 Hamilton Shaft, ca. 1893

MENOMINEE RANGE HISTORY – CATALOG OF MENOMINEE IRON RANGE MINING PHOTOGRAPHS

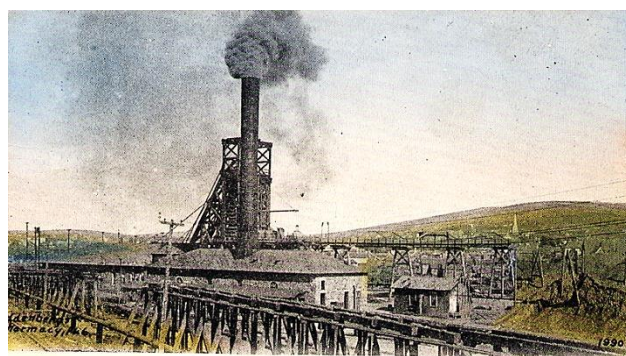
[Compiled by William J. Cummings]



Hamilton Shaft Steam Shovel and Crew
ca. 1895-1900



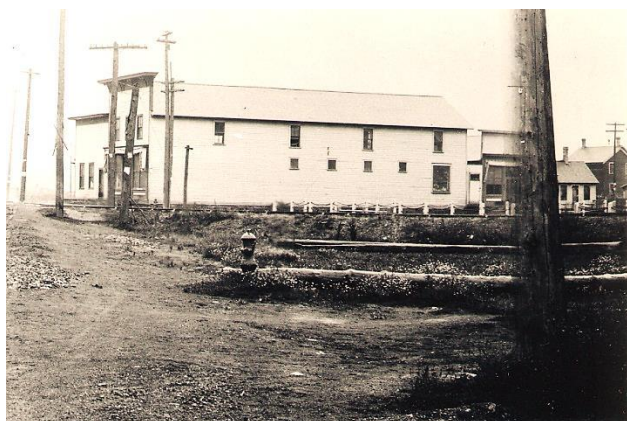
Hamilton Steel Shafthouse and
Smokestack, ca. 1914



Oliver Iron Mining Co., Chapin Mine, Iron
Mountain, Mich., showing Hamilton Shaft,
postmarked 1914

MENOMINEE RANGE HISTORY – CATALOG OF MENOMINEE IRON RANGE MINING PHOTOGRAPHS

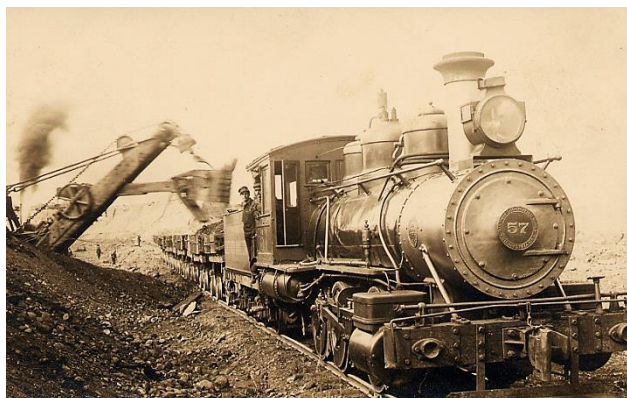
[Compiled by William J. Cummings]



Oliver Iron Mining Company Store, North
Stephenson Avenue



Oliver Iron Mining Company Office, North
Stephenson Avenue, just past East Chapin
Pit



Oliver Iron Mining Company Steam Engine
No. 57, with Steam Shovel Loading Ore

Ca. 1915



Oliver Iron Mining Company Steam Engine
No. 144 with Jack Miller, ca. 1915



Oliver Iron Mining Company Steam Engine
No. 300, ca. 1915

Anderson Mine (1887)

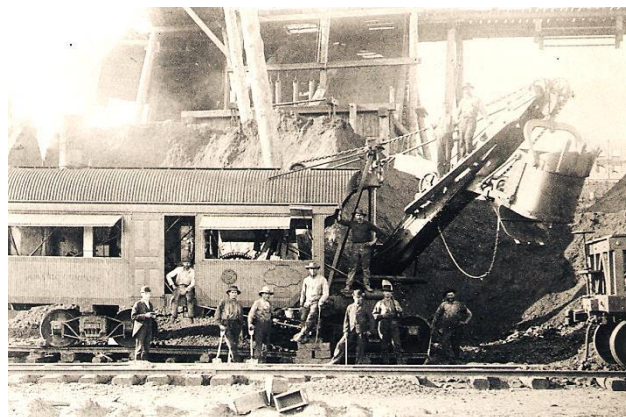
Pewabic Mine (1887)

MENOMINEE RANGE HISTORY – CATALOG OF MENOMINEE IRON RANGE MINING PHOTOGRAPHS

[Compiled by William J. Cummings]



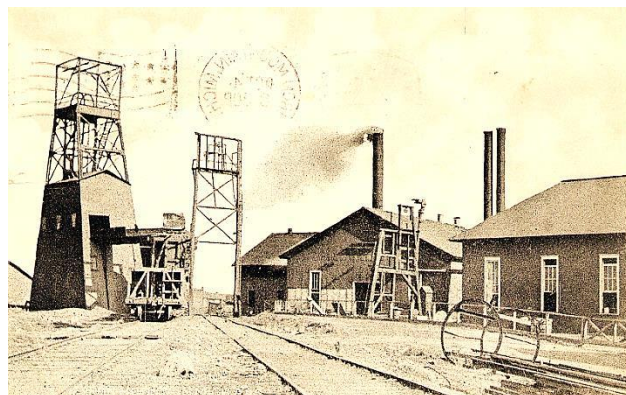
Pewabic Mine, facing north, ca. 1890



Pewabic Mine Steam Shovel and Workers,
ca. 1893



Pewabic Mine Boarding House at Pewabic
Location, ca. 1905



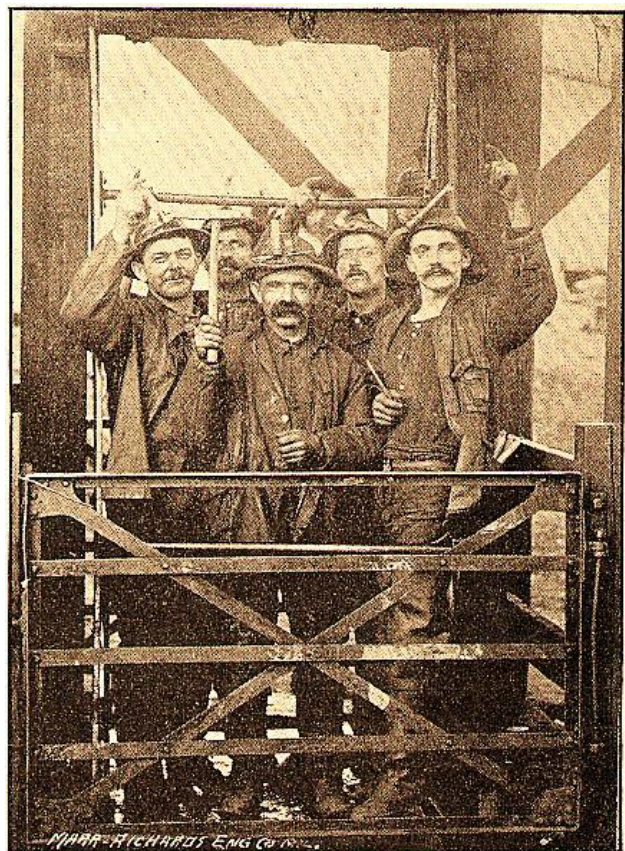
Pewabic Mine with Shaft Housing,
postmarked 1910



Pewabic Mine Boarding House Boarders,
detail of above photograph, ca. 1905

MENOMINEE RANGE HISTORY – CATALOG OF MENOMINEE IRON RANGE MINING PHOTOGRAPHS

[Compiled by William J. Cummings]

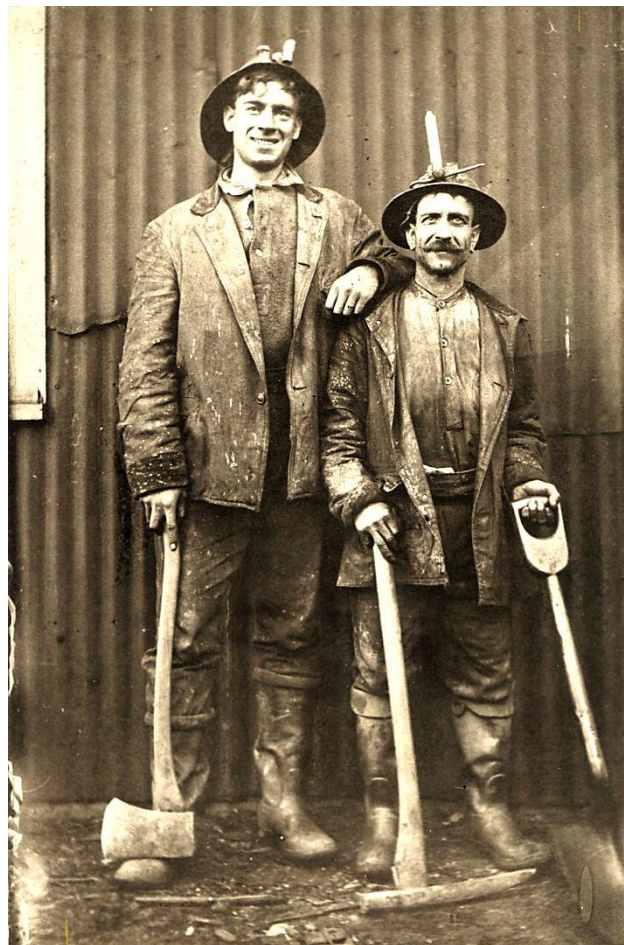


MINERS DESCENDING SHAFT, PEWABIC MINE.

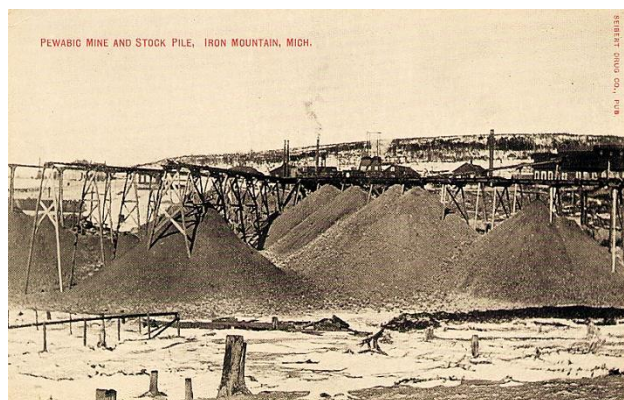
Miners Descending Shaft, Pewabic Mine
Nursey, 1891



Survivors of the Pewabic Mine Cave-In of
October 25, 1894



Pewabic Miners Joseph Trestrail and
Italian Mining Partner, ca. 1910



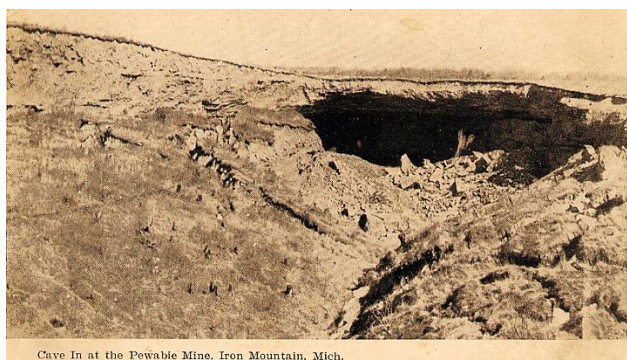
MENOMINEE RANGE HISTORY – CATALOG OF MENOMINEE IRON RANGE MINING PHOTOGRAPHS

[Compiled by William J. Cummings]

Pewabic Mine and Stock Pile, Iron
Mountain, Mich., ca. 1910-1915



Possibly Pewabic Mine with Stockpiles
ca. 1915-1920



Cave In at the Pewabic Mine, Iron Mountain, Mich.

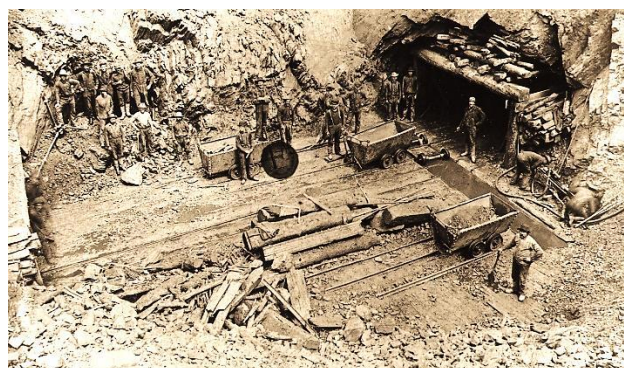
Cave In at the Pewabic Mine, Iron
Mountain, Mich., ca. 1920-1930



Pewabic Mine Cave In, Iron Mountain,
Mich., ca. 1950-1960

Walpole Mine (1887)

**Antoine Mine (1895)/Clifford Mine
(1895)/Traders Mine (1895)**



Possibly Traders Mine, ca. 1895-1900



Probably Traders Mine, north of Lake
Antoine (visible in background)
ca. 1895-1900

MENOMINEE RANGE HISTORY – CATALOG OF MENOMINEE IRON RANGE MINING PHOTOGRAPHS

[Compiled by William J. Cummings]

October 31, 1906

**West Ludington Mine (1901 –
exploration)**

Bradley Mine (1937)

Spencer Mine (xxxx)

FELCH MOUNTAIN RANGE

Hancock Mine (1881)

Hecla Mine (1881)

**Calumet Mine (1882; reopened in
1906)**



Hoist at Old Traders Mine, north of Lake
Antoine, ca. 1895-1900



Traders Mine Train Wreck
October 31, 1906



Traders Mine Train Wreck



Shaft No. 1, Calumet Mine, Felch Mountain
Range, postmarked July 15, 1910

MENOMINEE RANGE HISTORY – CATALOG OF MENOMINEE IRON RANGE MINING PHOTOGRAPHS

[Compiled by William J. Cummings]



Calumet Mine Location, Felch Mountain
Range, ca. 1910-1913

Metropolitan Mine (1882)

**Northwestern Mine (1883)/Northern
Mine (1902)**

Deerhunt Mine (1899)

Coal Dock and Engine House, Calumet
Mine, Felch Mountain Range
Postmarked May 29, 1912



Calumet Mine, Looking North, Felch
Mountain Range, ca. 1910



View of Groveland and Mines, Felch
Mountain Range, ca. 1910

Randville Mine (1929 – exploration)



A Mine Shaft at Iron Mountain, Michigan
unidentified mine, ca. 1920-1930

MENOMINEE RANGE HISTORY – CATALOG OF MENOMINEE IRON RANGE MINING PHOTOGRAPHS

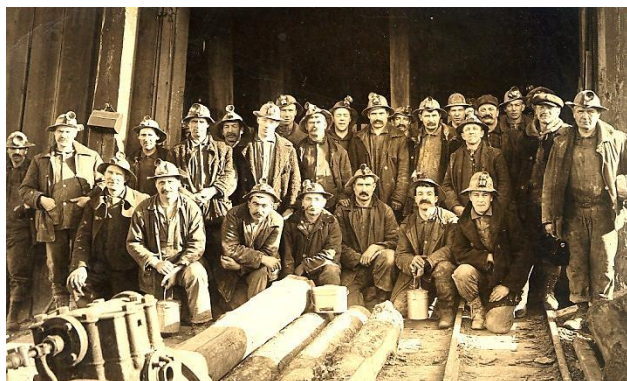
[Compiled by William J. Cummings]



Iron Ore Piles, Iron Mountain, Mich.
unidentified mine, ca. 1920-1930



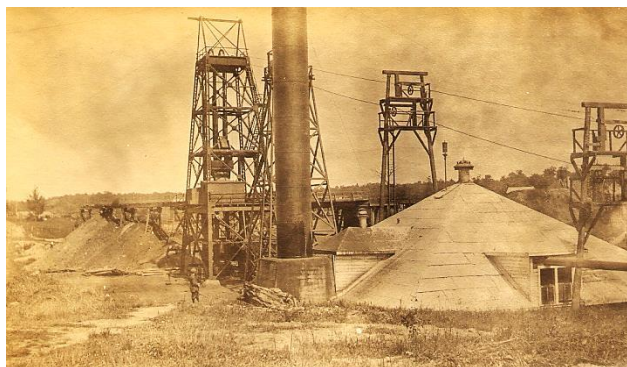
Unidentified mine



Unidentified miners with carbide lamps in
front of double shaft opening; possibly C
Ludington Shaft of the Chapin Mine, Iron
Mountain, ca. 1907-1918



Unidentified miners underground with sign
reading 10 Level B Hotel; possibly the Millie
Mine, Iron Mountain, ca. 1910-1920



Unidentified mine with pyramid or cone,
ca. 1915-1920



Unidentified miner underground with
carbide lamp

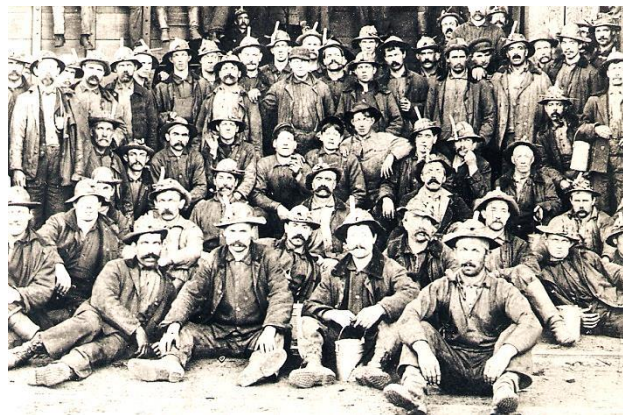
MENOMINEE RANGE HISTORY – CATALOG OF MENOMINEE IRON RANGE MINING PHOTOGRAPHS

[Compiled by William J. Cummings]



Seven unidentified miners on stockpile or
slag pile wearing candlesticks

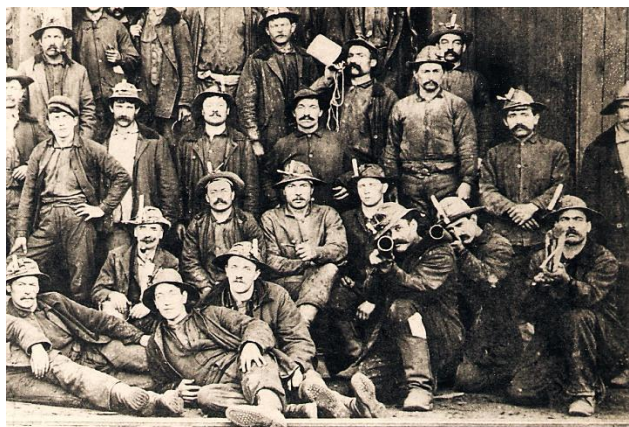
Unidentified group of miners with
candlesticks (detail), ca. 1890-1900



Unidentified group of miners with
candlesticks (detail), ca. 1890-1900



Unidentified group of miners with
candlesticks, ca. 1880-1900



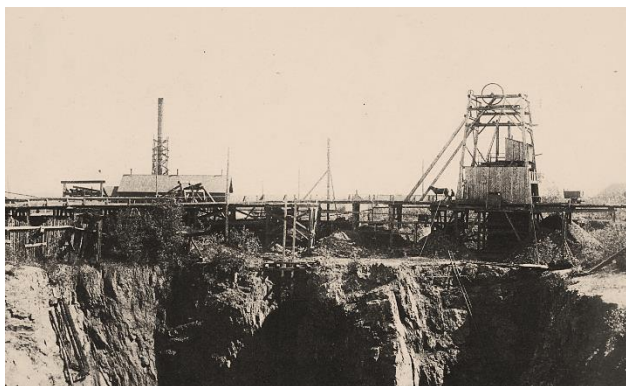
Unidentified pair of miners with candlesticks
riding skip, ca. 1880-1900

MENOMINEE RANGE HISTORY – CATALOG OF MENOMINEE IRON RANGE MINING PHOTOGRAPHS

[Compiled by William J. Cummings]

COMMONWEALTH

Commonwealth Mine (1880)



Commonwealth Mine, J.J. Eskil Photo, ca.
1880-1885

Bristol Mine (1892)

Tobin Mine (1901)



General View of the Tobin Mine, Crystal
Falls, Mich., 1908

FLORENCE

Florence Mine (1880)

Buckeye Mine (1900)

Kimball Mine (1906)

McDonald Mine (1906)

Ravenna Mine (1912)

CRYSTAL FALLS

Crystal Falls Mine (1882)

Great Western Mine (1882)

Armenia Mine (1889)

Lamont Mine (1889)

Hollister Mine (1890)

Mansfield Mine (1890)

Lincoln Mine (1891)

Carpenter Mine (xxxx)



Carpenter Mine, Crystal Falls, Mich., ca.
1915-1920

Hope Mine (xxxx)

MENOMINEE RANGE HISTORY – CATALOG OF MENOMINEE IRON RANGE MINING PHOTOGRAPHS

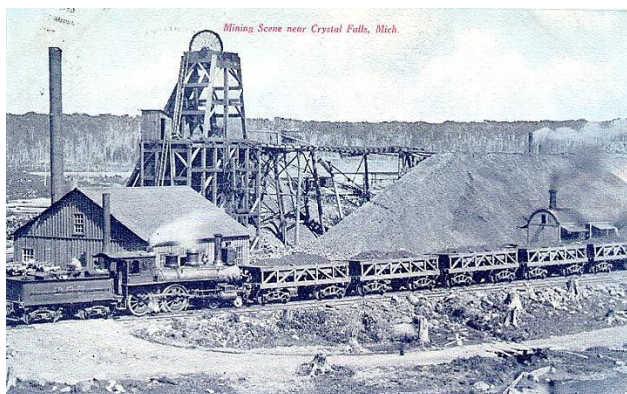
[Compiled by William J. Cummings]

Lot 3 Mine (xxxx)

Mastodon Mine (xxxx)

Monongahela Mine (xxxx)

Youngstown Mine (xxxx)



Mining Scene near Crystal Falls, Mich.,
postmarked September 12, 1907



Iron Mine Near Crystal Falls, Mich., ca.
1950-1960

Iron Mine Near Crystal Falls, Mich., ca.
1950-1960



"Trammers" Pub. For Rezin's Drug Store,
Crystal Falls, Mich., postmarked 1922

ALPHA

MENOMINEE RANGE HISTORY – CATALOG OF MENOMINEE IRON RANGE MINING PHOTOGRAPHS

[Compiled by William J. Cummings]



Pit View, Alpha, Michigan, Open Pit Mine
near Mastodon Township, Iron County,
Michigan, ca. 1907-1918

The Hiawatha Mine, Iron River, Stambaugh
District, Mich., ca.

Riverton Mine (1898)

Baltic Mine (1901)

Youngs Mine (1905)

James Mine (reopened in 1906)

Chatham Mine (1907)

AMASA

Hemlock Mine (1889)

Gibson Mine (1892)

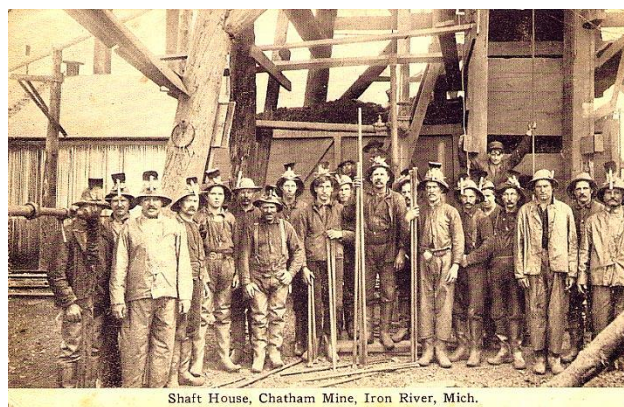
Michigan Mine (1893)

Channing Mine (xxxx)

IRON RIVER/STAMBAUGH

Nanaimo Mine (1882)

Hiawatha Mine (1893; 1908)



Shaft House, Chatham Mine, Iron River, Mich.

Shaft House, Chatham Mine, Iron River,
Mich., postmarked December 11, 1911

Fogarty Mine (1907)

Berkshire Mine (1908)

Zimmerman Mine (1908)

Baker Mine (1909)

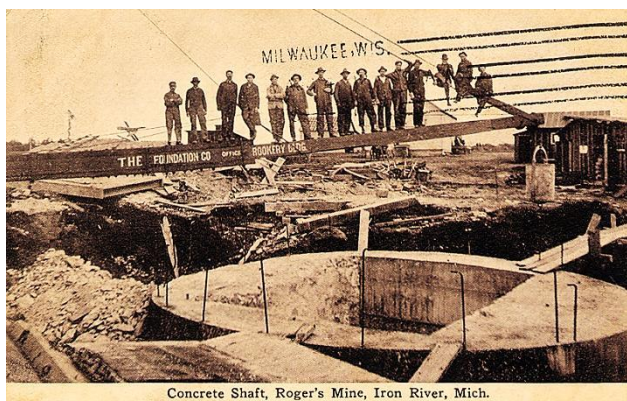
Tully Mine (1909)

Chicagon Mine (1911)

MENOMINEE RANGE HISTORY – CATALOG OF MENOMINEE IRON RANGE MINING PHOTOGRAPHS

[Compiled by William J. Cummings]

Rogers Mine (1912)



Concrete Shaft, Roger's Mine, Iron River, Mich.

Concrete Shaft, Roger's Mine, Iron River, Mich., postmarked August 3, 1912

Bates Mine (xxxx)



Bates Mine, Iron River, Mich.

Bates Mine, Iron River, Mich., ca. 1910-1920

Dober Mine (xxxx)

Gleason Mine (xxxx)

Goodman Mine (xxxx)

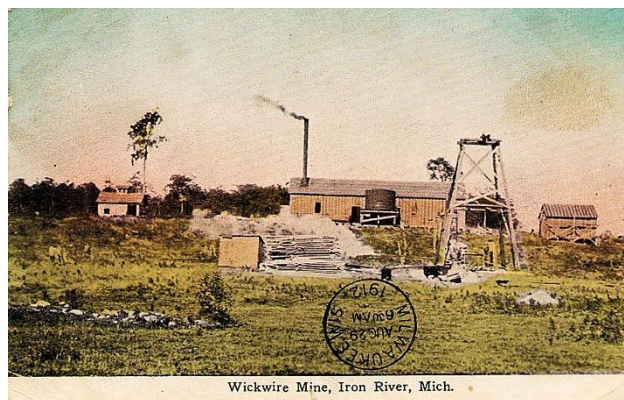
Hall Mine (xxxx)

Isabella Mine (xxxx)

McGillis Mine (xxxx)

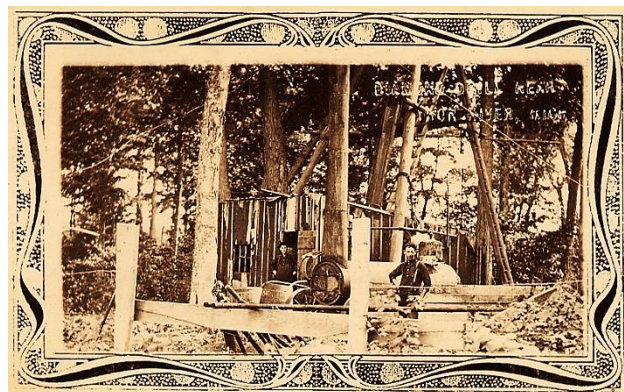
Sheridan Mine (xxxx)

Wickwire Mine (xxxx)



Wickwire Mine, Iron River, Mich.

Wickwire Mine, Iron River, Mich., postmarked August 28, 1912



Diamond Drill Near Iron River, Mich., postmarked August 31, 1912

MENOMINEE RANGE HISTORY – CATALOG OF MENOMINEE IRON RANGE MINING PHOTOGRAPHS

[Compiled by William J. Cummings]



Iron Ore Mining, Iron Range Studio, Iron
River, Mich., ca. 1920-1930



Iron Ore Mining, Iron Range Studio, Iron
River, Mich., ca. 1920-1930 (detail)